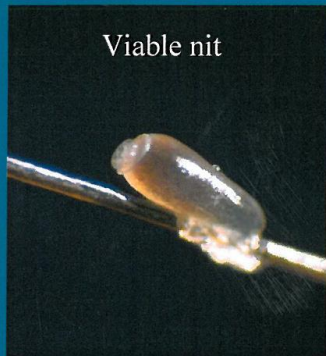
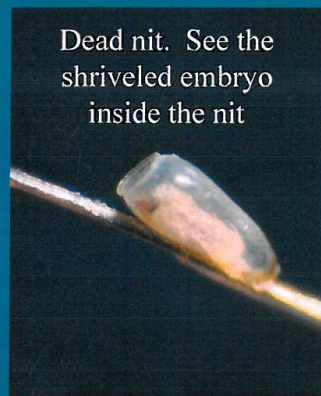


Quick Facts about Lice and Nits

Barb Ogg, UNL Extension Educator



Nits are light-colored when laid, but turn brown before they hatch. They are oval-shaped and laid on one side of the hair shaft. There are no products that safely dissolve the glue that holds the egg to the hair because the glue is chemically similar to keratin, the protein that hair is composed of.



Dead and hatched nits are white. Even after a nit hatches, the nit will stay attached to the hair, because the glue is so strong. Removing nits with a wet combing technique (cooking oil) and a metal nit comb will help to remove nits.



There are four sizes of lice. The smallest lice are smaller than the head of a pin. Adult lice are about the size of small grains of rice. Because the first stage lice are so small, it is easy to miss them. An electronic comb may be helpful in detecting lice.